

VEREINFACHTE EU-KONFORMITÄTSERKLÄRUNG

Hiermit erklärt Oktalite Lichttechnik GmbH, dass der Funkanlagentyp KALO PLUS BLE der Richtlinie 2014/53/EU entspricht. Der vollständige Text der EU-Konformitätserklärung ist unter der folgenden Internetadresse verfügbar: <https://www.oktalite.com/downloads>

SIMPLIFIED EU DECLARATION OF CONFORMITY

Hereby, Oktalite Lichttechnik GmbH declares that the radio equipment type KALO PLUS BLE is in compliance with Directive 2014/53/EU. The full text of the EU declaration of conformity is available at the following internet address: <https://www.oktalite.com/downloads>

DECLARATION UE DE CONFORMITE SIMPLIFIEE

Le soussigné, Oktalite Lichttechnik GmbH, déclare que l'équipement radioélectrique du type KALO PLUS BLE est conforme à la directive 2014/53/UE. Le texte complet de la déclaration UE de conformité est disponible à l'adresse internet suivante: <https://www.oktalite.com/downloads>

DICHIARAZIONE DI CONFORMITÀ UE SEMPLIFICATA

Il fabbricante, Oktalite Lichttechnik GmbH, dichiara che il tipo di apparecchiatura radio KALO PLUS BLE è conforme alla direttiva 2014/53/UE. Il testo completo della dichiarazione di conformità UE è disponibile al seguente indirizzo Internet: <https://www.oktalite.com/downloads>

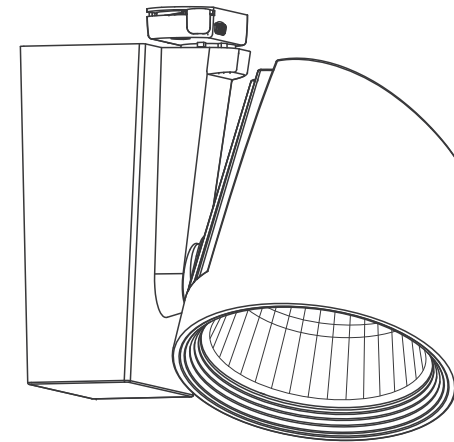
DECLARACIÓN UE DE CONFORMIDAD SIMPLIFICADA

Por la presente, Oktalite Lichttechnik GmbH declara que el tipo de equipo radioeléctrico KALO PLUS BLE es conforme con la Directiva 2014/53/UE. El texto completo de la declaración UE de conformidad está disponible en la dirección Internet siguiente: <https://www.oktalite.com/downloads>



Oktalite Lichttechnik GmbH
Mathias-Brüggen-Straße 73
50829 Köln, Germany
T +49 221 59767-0
F +49 221 59767-40
mail@oktalite.com
www.oktalite.com

© Oktalite Lichttechnik GmbH, 2020



KALO PLUS / KALO PLUS BLE LED / LED^{IQ}

- DE Montageanleitung
- EN Installation instructions
- FR Notice de montage
- IT Istruzioni per il montaggio
- ES Instrucciones de montaje
- RU Инструкция по монтажу

KALO PLUS / KALO PLUS BLE LED / LED^{IQ}

DE Hierzu gehören die allgemeinen Montagehinweise TK 10166740. Vor Montage/Inbetriebnahme die Anleitungen lesen. Technische Änderungen vorbehalten!

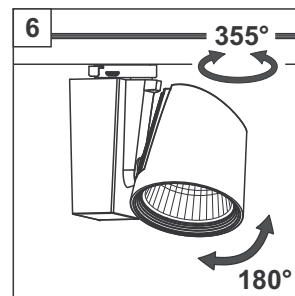
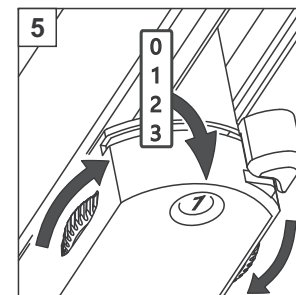
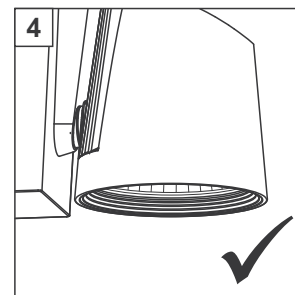
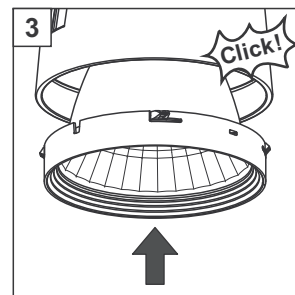
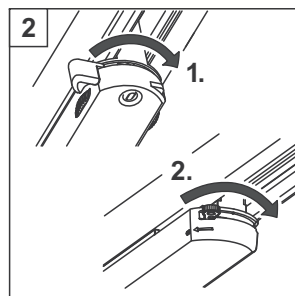
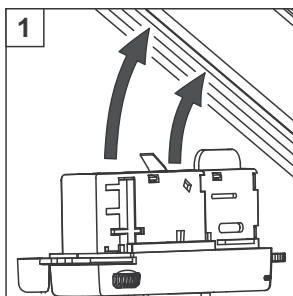
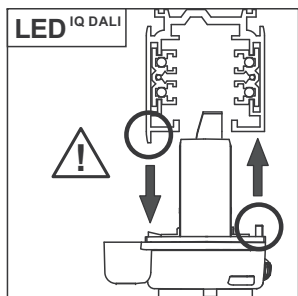
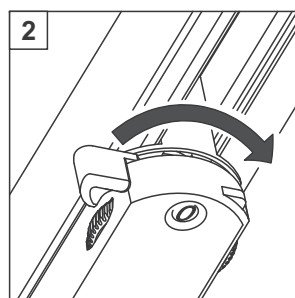
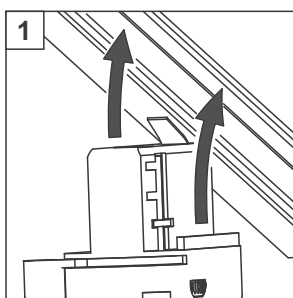
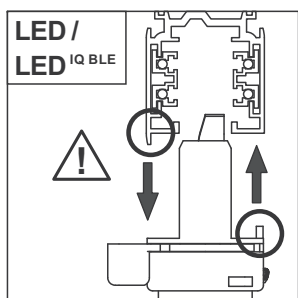
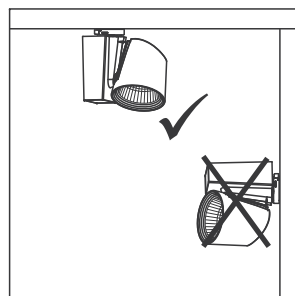
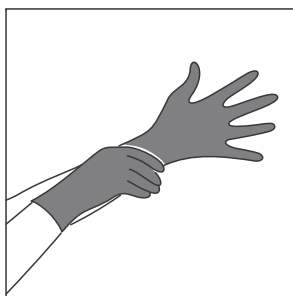
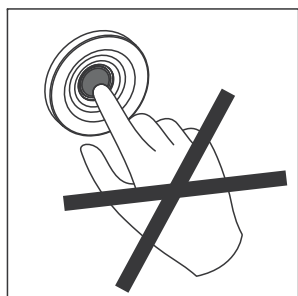
EN This includes the general installation instructions TK 10166740. Before mounting/putting into operation read the instructions. Subject to technical changes!

FR En font partie les instructions générales de montage TK 10166740. Lire les instructions avant le montage/mise en service. Sous réserve de toute modification technique !

IT Ne fanno parte le istruzioni generali per il montaggio TK 10166740. Leggere le istruzioni prima del montaggio/della messa in esercizio. Con riserva di modifiche tecniche!

ES Aquí corresponden las indicaciones generales de montaje del modelo con el TK 10166740. Lea las instrucciones antes del montaje/puesta en funcionamiento. Nos reservamos el derecho de realizar modificaciones técnicas.

RU К ним относятся общие инструкции по установке ТК 10166740. Прочитайте инструкцию перед установкой / вводом в эксплуатацию. Мы оставляем за собой право на технические изменения!



DE Austausch der Optik

EN Replacement of optics

FR Echange d'optique

IT Sostituzione di ottica

ES Sustitución de óptica

RU Замена оптики

