

Montageanleitung

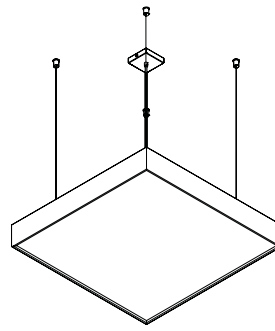
Mounting instructions

Notice de montage

Istruzioni di montaggio

Instrucciones de montaje

A



oktalite

Loreto
LED



Achtung!

Elektrostatisch gefährdete Bauelemente

Attention!

Static sensitive devices

Attention!

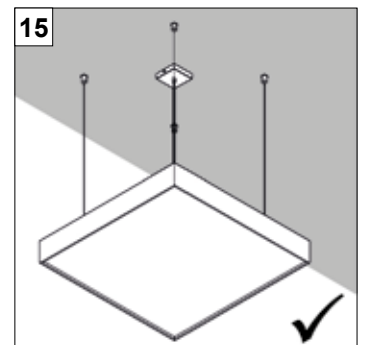
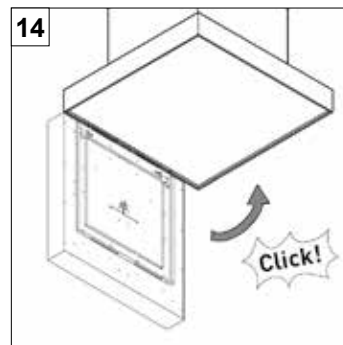
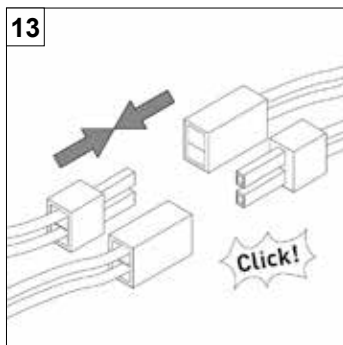
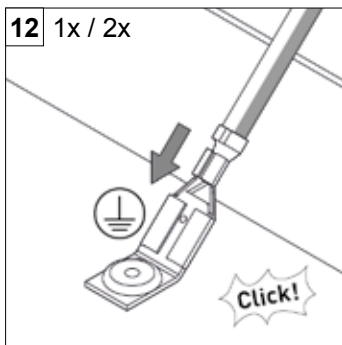
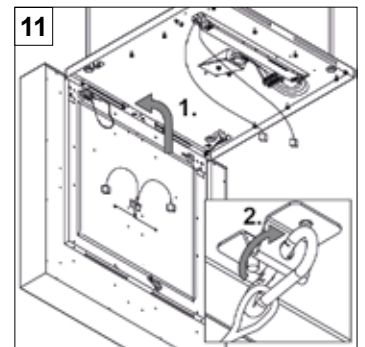
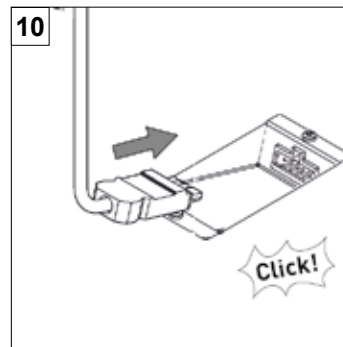
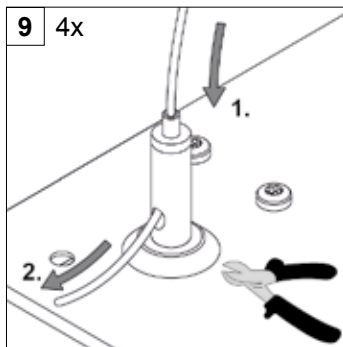
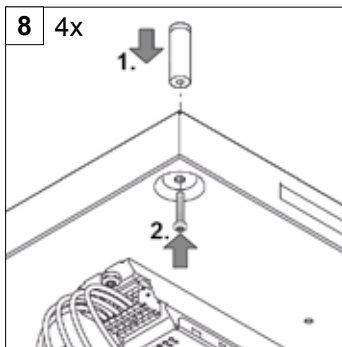
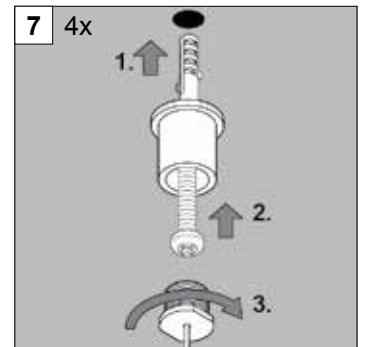
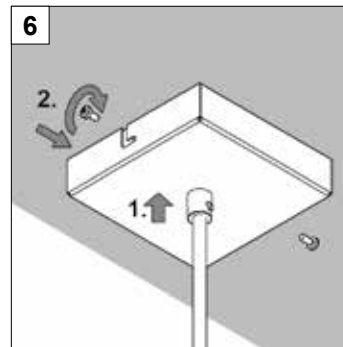
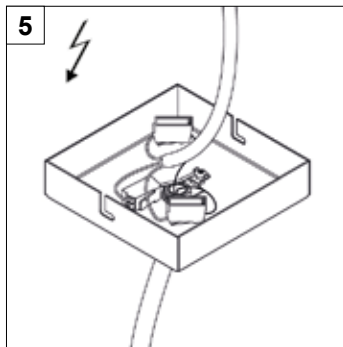
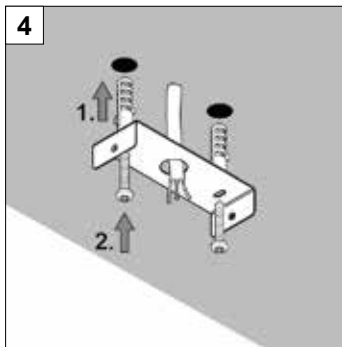
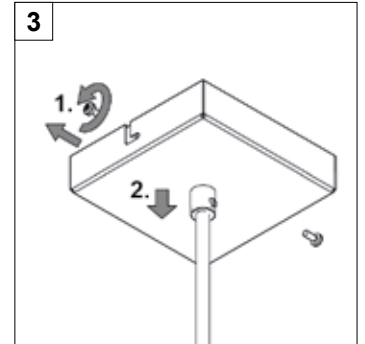
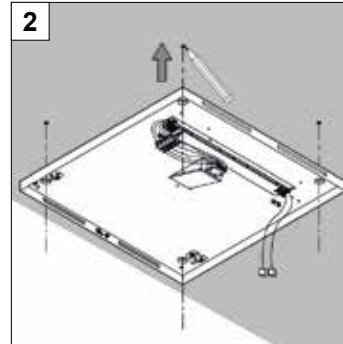
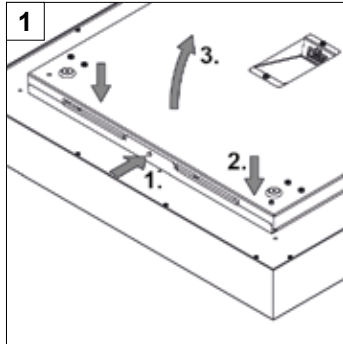
Circuits sensibles à l'électricité statique

Attenzione!

Competenti sensibili alle cariche elettrostatiche

¡Atención!

Dispositivos sensibles a las descargas electrostáticas



Montageanleitung

Mounting instructions

Notice de montage

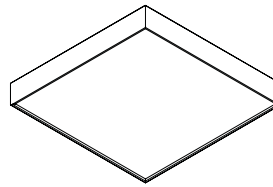
Istruzioni di montaggio

Instrucciones de montaje

B

oktalite

Loreto
LED



Achtung!

Elektrostatisch gefährdete Bauelemente

Attention!

Static sensitive devices

Attenzione!

Circuiti sensibili a l'elettricità statica

Attenzione!

Competenti sensibili alle cariche elettrostatiche

¡Atención!

Dispositivos sensibles a las descargas electrostáticas

